

The Use of Pneumoperitoneum During Laparoscopic Surgery as a Model to Study Pathophysiologic Phenomena: The Correlation of Cardiac Functionality with Computerized Acoustic Indices—Preliminary Data

Amitai Bickel, MD,¹ Arieh Eitan, MD,¹ Dimitry Melnik, MD,² Atalia Weiss,³ Noam Gavrieli, M.D, PhD,³ David Kniaz, MD,¹ and Nathan Intrator, PhD⁴

Abstract

Background: Induction of pneumoperitoneum during laparoscopic surgery leads to diverse cardiovascular changes that can be used as a model to study pathophysiologic phenomena. Application of novel signal processing and figure extraction enabled searching for correlation between various signals and pathophysiologic setting. Our aim was to quantitatively correlate cardiac functionality (as expressed by cardiac output) with the spectral energy of the first heart sound (S1) obtained from the phonocardiogram, during laparoscopic surgery.

Patients and Methods: Patients who were scheduled for elective laparoscopic operations were enrolled in the study. Cardiac output was maximally changed during anesthesia and abdominal insufflation and was obtained from the arterial pressure wave (FloTrac™ sensor and Vigileo™ monitor [Edwards Lifesciences Ltd.]). Heart signals were recorded during surgery from each subject by a computerized digital data acquisition system. The automatic analysis of the heart sounds included segmentation that was based on the energy envelope of the heart sounds together with analysis of the electrocardiogram signal. We analyzed the morphology of the sounds using hierarchical cluster analysis to remove those sounds that were not reliably recorded. The magnitude of the amplitude of heart sounds was obtained by using the Hilbert transform for each heartbeat. Statistical analysis was based on linear regression.

Results: Following exclusion of 3 patients (mainly because of technical reasons), we were left with 7 patients who demonstrated statistically significant positive correlation between cardiac index and the amplitude of S1 (regression coefficient between 0.4 and 0.9, $P < .05$). Linear regression analysis was done on the normalized values of all 7 patients and was found to be highly significant.

Conclusions: In this study we have demonstrated significant linear correlation between the acoustic amplitude (spectral energy) of S1 and cardiac functionality, through sophisticated computerized analysis, using the pneumoperitoneum model for changing the cardiac output.

Introduction

WHEN POSITIVE PRESSURE pneumoperitoneum (PP) is induced during laparoscopic cholecystectomy, we usually expect certain cardiovascular changes, mainly related to cardiac output, stroke volume, and systemic vascular resistance. As such, we suggest that PP could serve as a physiological model that enables studying typical changes that

might occur during clinical disorders involving increased intraabdominal pressure. We also propose that PP could serve as an experimental model to induce cardiovascular changes, negating the necessity to induce similar changes by drugs or other means, mainly in an animal model, in order to study specific physiological phenomena.

The information obtained from heart sounds has been studied for decades and correlated with various clinical

Departments of ¹Surgery and ²Anesthesiology, Western Galilee Hospital, Nahariya, Israel, affiliated with the Faculty of Medicine, Technion–Israel Institute of Technology, Haifa, Israel.

³Rappaport Faculty of Medicine, the Technion, Israel Institute of Technology, Haifa, Israel.

⁴School of Computer Science, Tel-Aviv University, Tel-Aviv, Israel.

settings. The acoustic energy (expressed by heart sounds) produced by the mechanical activity of various cardiac components and processes has been used to provide data related to diverse cardiac pathophysiological abnormalities as well as physiological variations. Traditionally, heart sounds are explained by the forceful closure of the atrioventricular and aortopulmonary valves. The first heart sound (S1) is considered to have four subcomponents and reflects the vibration of the entire cardiohemic system due to accelerations and decelerations of blood within the heart and great vessels following ventricular contraction.¹ Specifically, systolic contraction of the ventricles triggers vibrations of the heart walls, valves, and blood. These vibrations propagate through the thoracic cavity and are received on the chest wall as transient low-frequency vibroacoustic signals, commonly known as S1.² The mechanical cardiac cycle is continuously controlled by the autonomic nervous system, which induces changes to both rate and intensity of myocardial contraction. In addition, the pulmonary system plays an important part in modulating the cardiovascular mechanical activity by respiratory-induced changes of the pleural pressure, arterial resistance and venous return, namely, preload.³ As such, the amplitude and morphology of S1 might be related to the force of cardiac contraction. Previous studies have shown effects of hemodynamic changes on characteristics of the heart sounds.^{4–10} However, most studies were limited to qualitative assessment and were done on animal models. The evolution of significant technological achievements enabled better various signal processing techniques for phonocardiogram (PCG) analysis.^{11,12} Applications of different methods for signal analysis were tested to provide the best features and characteristics of the PCG signals.^{13–15} Application of novel signal processing and feature extraction has demonstrated good linear correlation between the spectral energy and frequency bandwidth of the acoustic signal of S1 and systolic functionality (peak systolic velocity and strain rate) during the pharmacological stress test in human subjects.^{16,17} In particular, methods that rely on morphological clustering of the heart sounds provide a good handle, enabling the association of different physiological conditions with heartbeats.¹⁸ To achieve robust automatic analysis of heart sounds, it is necessary to perform segmentation of the heart sounds into heart cycles and discern the heart sound components (either only S1 and the second heart sound, or also the third and fourth heart sounds and murmurs).^{19,20} Often, classification of the heart sounds enables recognition of cardiac pathologies.^{18,21}

In the present study we aim to quantitatively correlate cardiac output (the end point of cardiac functionality) with the spectral energy of S1 obtained from the PCG in patients undergoing upper abdominal laparoscopic surgery. We suggest that the hemodynamic changes that usually follow positive pressure PP (during operation) may serve as a high-quality model to test such correlation. We further demonstrate that it is possible to automatically monitor the heart sound to detect physiological changes associated with abdominal pressure changes.

Patients and Methods

Ten patients who were scheduled to elective laparoscopic upper abdominal surgeries were enrolled in the study. Nine

patients had undergone laparoscopic cholecystectomy due to symptomatic cholelithiasis, and one underwent gastroplasty. All were categorized as American Society of Anesthesia Class I–II. Informed consent was obtained from all participants, and the study was approved by the local ethics committee (in accordance with the Helsinki Declaration). The study population included 7 men and 3 women, between 31 and 84 years old.

Preoperative medication included diazepam (5 mg) and intravenous first-generation cephalosporin antibiotics. Anesthesia was induced by fentanyl (1–5 $\mu\text{g}/\text{kg}$), propofol (2 mg/kg) or thyopentone (4 mg/kg), and esmerone (0.5 mg/kg) or atracurium, following preoxygenation by mask. Midazolam was additionally prescribed (1–2 mg). Anesthesia was maintained with nitrous oxide in oxygen (2:1), isoflurane (1%), esmerone or atracurium (0/1–0.15 mg/kg), and fentanyl (5–10 mg on demand). Ventilation was mechanically controlled at a frequency and tidal volume to maintain normocapnea. (Normocapnea was maintained by monitoring end-tidal CO_2 . When increased, tidal volume was slightly elevated, standardized by peak inspiratory pressure. When it was further necessary to maintain normocapnea, a mild increase in respiratory frequency was induced, without affecting cardiac performance.)

All patients underwent laparoscopic procedures following peritoneal inflation by CO_2 and the introduction of four cannulae, as usually accepted. PP was automatically maintained at 14 mm Hg, at an average insufflation rate of 1–1.5 L/minute.

Intraoperative monitoring included blood pressure, pulse oximetry, continuous electrocardiogram (ECG) recording, and end-tidal CO_2 .

Cardiac output was continuously derived and recorded from the arterial pressure using a FloTrac™ sensor connected to a Vigileo™ monitor (Edwards Lifesciences Ltd.) (software versions 1.07, 1.14).²²

Heart signals were recorded from each subject by a digital data acquisition system. In brief, the system consists of piezoelectric contact transducers (PPG sensor model 3, OHK Medical Devices), an ECG sensor (model EKG-BTA, Vernier Software & Technology), a preamplifier with high input impedance and a linear frequency range of 1–4 KHz, a 16-bit analog-to-digital converter (model PMD-1608FS, Measurement Computing Corp.), and a recording software written in Matlab version 6.5 (The Mathworks Inc.), running on a mobile computer. The transducers were placed in four auscultation points: 2nd and 4th intercostal spaces at the left sternal border, the suprasternal notch, and the 2nd intercostal space at the right sternal border. The acquired signals were pre-processed by band-pass filtering in order to remove low-frequency baseline wandering and high-frequency ambient noise. Several recordings (at least 30 seconds) were done during surgery with respect to three different phases while the patient was under anesthesia: Before establishment of PP, during PP and operation, and after evacuation of CO_2 PP. Figure 1 depicts an example of the recorded heart sounds. Figure 2 demonstrates the final graphical analysis of heart sounds and the respiratory cycle from which the final computerized data are extracted.

In the final analysis we included only vibroacoustic signals recorded in a satisfactory quality (i.e., without significant movements of the patient's body causing

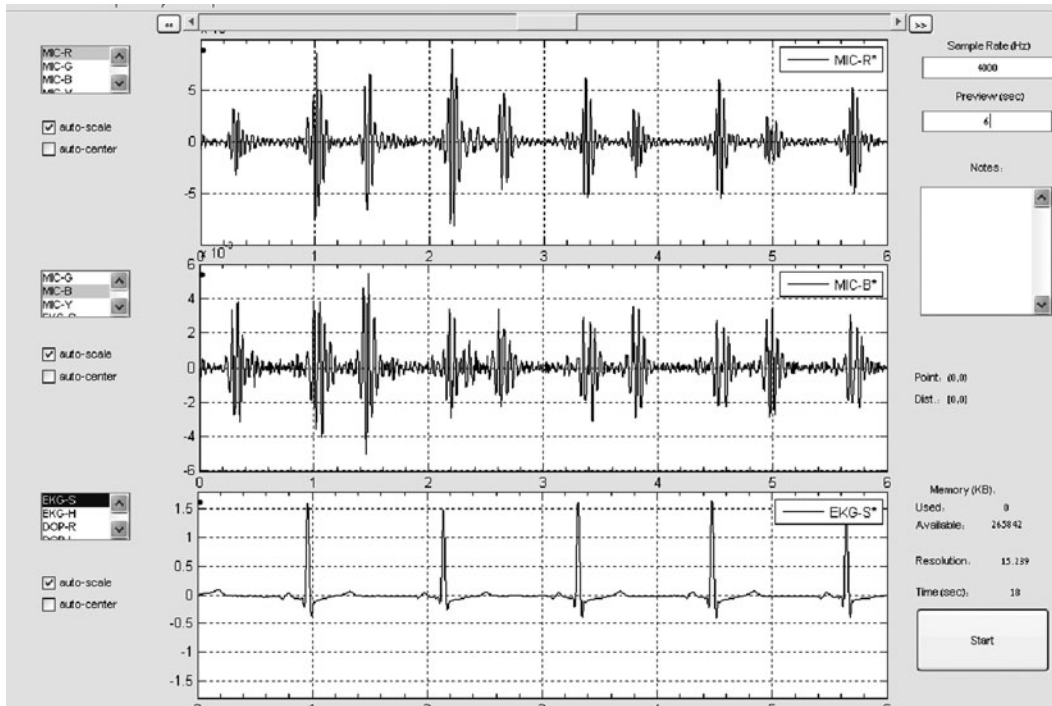
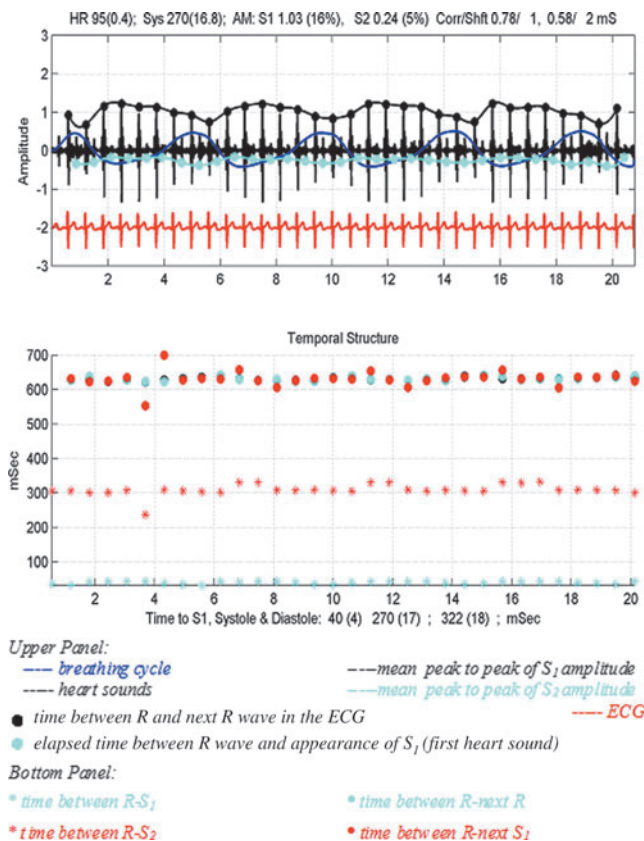


FIG. 1. An example of (upper panels) the heart sounds signal recorded from two sensors and (bottom panel) electrocardiogram signal.



interruption of the recording and without strong background noise, which sometimes exists in the operation room). Also, for each patient, the analysis included only recordings that were done while the patient's bed position was not changed during surgery. This was necessary so as to avoid any effect on the heart sound amplitude from technical factors such as the distance of the sensor from the heart. The automatic analysis of the heart sounds included segmentation based on the envelope of the energy of the heart sounds together with analysis of the ECG signal for detection of the QRS complex. We further performed a morphological analysis of the heart sounds for finer and more accurate localization and identification of the sounds. This was based on tools that we have recently developed for fine segmentation and morphological analysis.^{18,23} Following the segmentation of S1 and the second heart sound, we analyzed the morphology of the sounds using hierarchical cluster analysis to remove from the statistical analysis those sounds that were not reliably recorded. A few heartbeat sounds were excluded as a result of the patient's movement or too high background noise in the operating room. The magnitude of the amplitude of heart sounds was obtained by using the Hilbert transform (a linear transformation, widely used in signal processing) of each heartbeat.²⁴ Statistical analysis of the duration and amplitude changes of the heartbeats was then performed. This heart sound

FIG. 2. Graphical analysis of heart sounds and the respiratory cycle, as elicited during the recording. The computerized data are obtained from such an illustrated extract. HR, heart rate; S1, first heart sound; S2, second heart sound.

analysis enabled us to identify distinct changes in the sound amplitude.

Amplitude normalization of heart sounds was obtained by dividing the amplitude of each recording by the amplitude of the recording that was obtained prior to the operation. The amplitudes were calculated using the Hilbert transform. By performing such individual normalization, rather looking for the absolute values of the amplitude, we eliminate the dependency of the sound on external factors such as large body mass index or poor placement of the contact sensors.

Statistical analysis was based on linear regression to identify significant correlation between the amplitude of the vibroacoustic signals of S1 and the second heart sound and the cardiac index values.

Results

We studied the relation between cardiac index (cardiac index/body surface area) and the amplitude of S1 (expressed by arbitrary units that were normalized). The relationship was examined by a linear regression analysis.

Three patients were excluded from the study because of technical problems during surgery. One of these was exposed to unexpected variations in intraabdominal pressure (due to muscular relaxation difficulties and technical problems related to the computerized monitoring apparatus), precluding a proper correlation between cardiac index and S1. The other two patients were excluded because of too many changes in their bed position during surgery, which prevented a sufficient number of reliable recordings in each surgical phase.

The remaining 7 patients demonstrated a statistically significant positive correlation between cardiac index and the amplitude of S1. Regression coefficients varied between 0.4 and 0.9 ($P < .05$). Figure 3 illustrates such correlation in one of the patients, representing a similar trend in all 7 patients. We normalized the values of cardiac index and S1 per each patient, in order to demonstrate the overall trend of such relation (Fig. 4). Linear regression analysis was done on the normalized values of all 7 patients (Fig. 5). The correlation was found to be highly significant ($r = 0.56$, $P < 1E^{-6}$).

Discussion

In the past, it has been shown that the amplitude of S1 is related to the degree of separation of mitral valve leaflets,

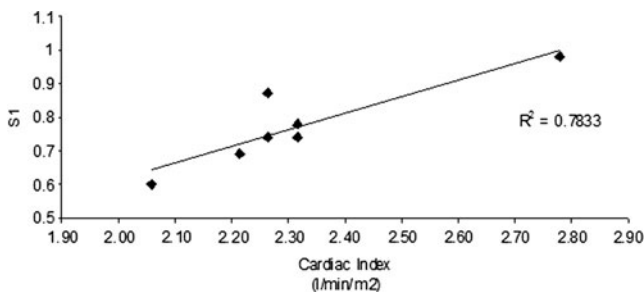


FIG. 3. The relation between cardiac index and S1 in one patient. The correlation is statistically significant: $P = .008$.

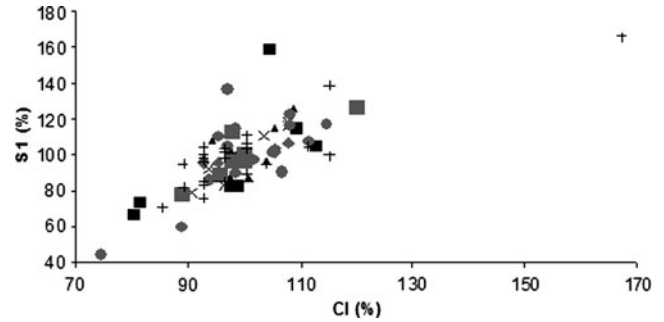


FIG. 4. Relation between the normalized values of cardiac index (CI) and S1 of all 7 patients who demonstrated statistically significant correlation between CI and S1.

determined by the relative timing of the left atrial and ventricular systole. Left ventricular contractility was also shown to be an independent factor determining the amplitude of S1.^{4,25} In this study we have demonstrated significant linear correlation between the acoustic energy of S1 and cardiac index in 7 healthy patients undergoing elective laparoscopic operations. This study complements our previous findings indicating amplitude and sound morphology changes due to intrathoracic pressure changes.²³ Positive pressure PP that was established during surgery functioned as a good physiological model, enabling sufficient hemodynamic fluctuations that were appropriate to delineate such correlation. There was no need for vasomotor drugs with potential harmful side effects, such as those used previously in trials involving animals or human volunteers.^{4,16}

Actually, heart sounds reflect the vibration of the cardio-hemic complex, triggered by the acceleration and deceleration of blood through the valves and against the cardiac walls, following abrupt mechanical events of the cardiac cycle.¹ The magnitude, timing, and morphology of heart sounds are influenced by relationships between pressure gradients in the cardiac chambers, muscle tension of the ventricles, and arterial pressure and distensibility. The orchestrated cardiac activity is continuously regulated by the autonomic nervous system and is affected by hormonal and pulmonary activities. The relation between the physiological processes producing the heart sounds and the morphology of the externally acquired acoustic signals is highly complex. The heart sounds, and in particular the amplitude of S1, directly manifest the

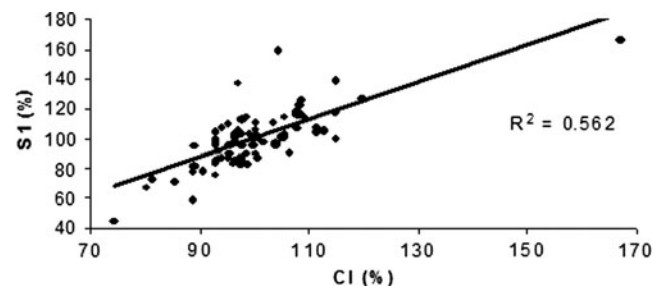


FIG. 5. Relation between the normalized values of CI and S1 of all 7 patients who demonstrated statistically significant correlation between CI and S1. The correlation illustrated here is also statistically significant ($P = 1.09E^{-10}$).

mechanical heart cycle and actually reflect the contractility of the left heart ventricle.^{4,25} The computational analysis framework included detailed heart sound morphology analysis and automatic elimination of noisy heart beats via clustering analysis. This novel signal processing and feature extraction method essentially followed and enabled us to delineate a linear relationship between the acoustic amplitude (spectral energy) of S1 and cardiac functionality.¹⁸ Although this is in accordance with previous studies reporting the influence of various cardiac indices on the acoustic energy of S1, the current work expresses such interplay for the first time, by using the end result of cardiac performance, namely, cardiac output.⁴⁻¹⁰

Technically, it is not possible to correlate an absolute measure of cardiac sounds to cardiac output, as the measurement is dependent on several external factors that cannot be controlled. Thus, to capture the correlation between the amplitude of S1 and cardiac output, a correlation that can be applicable across patients, we used a normalized measure of amplitude. This measure was obtained by dividing the amplitude of each heart sound by amplitude of the reference heart sound obtained individually. For reference we have chosen the average amplitude of the sound at rest, which, in this case, is before the beginning of the operation. Using such a normalized measure removes individual factors like body mass index and electrode location and enables concentration on the slope of the change and equate this with the change in cardiac output.

The clinical utility of our technology (depending on further cumulative data supporting our findings) might be the application of noninvasive cardiac monitoring in medicine, particularly in general as well as laparoscopic surgery. Based on the concept of using PP during laparoscopic surgery as a novel experimental model to study cardiovascular phenomena, we might expect further clinical (medical) and scientific profits.

The limitation of the study is the small number of participants, making it a preliminary work. Another limitation concerns the production of nonperiodic external noise made by distortion of body movements and environmental sounds noise that may affect the morphology of the recorded signals. Some technical problems that were faced during the acoustic recording, leading to the exclusion of some participants (described in Results), should be overcome in the future in order to test our computerized analysis system on a broader study population.

In conclusion, using sophisticated computerized analysis, a significant linear correlation was demonstrated between acoustic heart signals of S1 and cardiac output, using the PP model. The PP model was found to be advantageous and feasible, as PP was induced as a prerequisite part of an elective laparoscopic surgery. Beside the scientific relevance of the study and the possibility of improving intraoperative monitoring during laparoscopic operations, establishing such a correlation may lead to the use of such sophisticated analysis methods for cardiac noninvasive monitoring in the future. We also recommend using the PP as a model for further physiological research.

Disclosure Statement

No competing financial interests exist.

References

- Luisada AA, Portaluppi F. The main heart sounds as vibrations of the cardiohemic system: Old controversy and new facts. *Am J Cardiol* 1983;52:1133-1136.
- Durand LG, Pibarot P. Digital signal processing of the phonocardiogram: Review of the most recent advancements. *Crit Rev Biomed Eng* 1995;23:163-219.
- Van Leeuwen P, Kuemmel HC. Respiratory modulation of cardiac time intervals. *Br Heart J* 1987;58:129-135.
- Sakamoto T, Kusakawa R, MacCanon DM, Luisada AA. Hemodynamic determinants of the amplitude of the first heart sound. *Circ Res* 1965;16:45-57.
- Kusakawa R, Bruce DW, Sakamoto T, MacCanon DM, Luisada AA. Hemodynamic determinants of the amplitude of the second heart sound. *J Appl Physiol* 1966; 21:938-46.
- Cassot F, Filippi P, Saadjian A. Mechanical aspect of the heart sound emission. *Med Prog Technol* 1975;3: 125-131.
- Clarke WB, Austin SM, Shan PM, Griffin PM, Dove JT, McCullough, Schreiner BF. Spectral energy of the first sound in acute myocardial ischemia. A correlation with electrocardiographic, hemodynamic, and wall motion abnormalities. *Circulation* 1978;57:593-598.
- Daddario RC, Freis ED. Kinetocardiogram, phonocardiogram, and arterial pulse wave during acute hemodynamic changes. *Circulation* 1966;34:423-436.
- Kusakawa R, Sasayama S, Watanabe M, Shirahama Y, Kim H, Yaginuma T. Hemodynamic correlation with phonocardiogram in aortic insufficiency. *Jpn Circ J* 1972;36:1089-1098.
- Hansen PB, Luisada AA, Miletich DJ, Albrecht RF. Phonocardiography as a monitor of cardiac performance during anesthesia. *Anesth Analg* 1989;68:385-387.
- Rangayyan RM, Lehner RJ. Phonocardiogram signal analysis: A review. *Crit Rev Biomed Eng* 1987;15:211-236.
- Stodieck LS, Luttgies MW. Relationships between the electrocardiogram and phonocardiogram: Potential for improved heart monitoring. *ISA Trans* 1984;23:59-65.
- Obaidat MS. Phonocardiogram signal analysis: Techniques and performance comparison. *J Med Eng Technol* 1993; 17:221-227.
- Nigam V, Priemer R. Accessing heart dynamics to estimate durations of heart sounds. *Physiol Meas* 2005;26:1005-1018.
- Debbal SM, Bereksi-Reguig F. Computerized heart sounds analysis. *Comput Biol Med* 2008;38:263-280.
- Amit G, Gavriely N, Lessik J, Intrator N. Automatic extraction of physiological features from vibro-acoustic heart signals: Correlation with echo-Doppler. *Comput Cardiol* 2005;32:299-302.
- Amit G, Lessik J, Gavriely N, Intrator N. Acoustic indices of cardiac functionality. In: *International Conference on Bio-Inspired Systems and Signal Processing (Biosignals)*, Proceedings Vol. 2, 2008, pp. 77-83.
- Amit G, Gavriely N, Intrator N. Cluster analysis and classification of heart sounds. *Biomed Signal Proc Control* 2009;4:26-36.
- Navin C, Palaniappan GR, Swaminathan S, Krishnan SM. Neural network classification of homomorphic segmented heart sounds. *Appl Soft Comput* 2007;7:286-297.
- Gill D, Gavriely N, Intrator N. Detection and identification of heart sounds using homomorphic envelope and self organizing probabilistic model. *Comput Cardiol* 2005;32: 957-60.

21. Dukur Z, Olmez T. Feature determination for heart sounds based on divergence analysis. *Digital Signal Process* 2009; 19:521–531.
22. Zimmermann A, Kufner C, Hafbauer S, et al. The accuracy of the Vigileo/FloTrac continuous cardiac output monitor. *J Cardiothor Vasc Anesth* 2008;22:388–393.
23. Amit G, Shukha K, Gavriely N, Intrator N. Respiratory modulation of heart sound morphology. *Am Physiol Heart Circ Physiol* 2009;296:H796–H805.
24. Feldman M. Theoretical analysis and comparison of the Hilbert transform decomposition methods. *Mech Systems Signal Process* 2008;22:509–519.
25. Shaver JA, Salerni R, Reddy PS. Normal and abnormal heart sounds in cardiac diagnosis. 1. Systolic sounds. *Curr Probl Cardiol* 1985;10:1–68.

Address correspondence to:
Amitai Bickel, MD
Department of Surgery
Western Galilee Hospital
Nahariya
Israel

E-mail: amitai@netvision.net.il